



CS-RIBX24 Series

Current Sensors & Switches with Relay



Overview

Enclosed, current sensors (voltage and current output) and switches (fixed and adjustable trip points) with relay (SPST, SPDT, 3PST).

Applications

- BACnet IP networks
- Lighting
- Time Delay

Features & Benefits

- Conveniently packaged reels in a box
- Sequential footage markings to facilitate installation
- Color coded and print legends for quick identification and troubleshooting

Model Selection

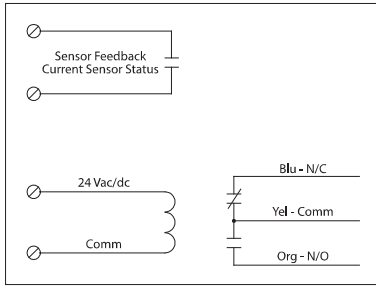
Model#	Range	Type ¹	Threshold	Sensor Output	Resistive	Override Switch	Contact Ratings
CS-RIBX24BF	.50-20 Amps	Internal with contact status	Fixed, .50 Amp	Solid State Contact; 30 Vac/dc, 0.4 Amp	20 Amp	No	-20 Amp Resistive @ 277 Vac -20 Amp Ballast @ 277 Vac (N/O) 10 Amp Ballast @ 277 Vac (N/C) Not rated for Electronic Ballast -10 Amp Tungsten @ 120 Vac (N/O) -1,110 VA Pilot Duty @ 277 Vac -770 VA Pilot Duty @ 120 Vac -240 Watt Tungsten @ 120 Vac (N/C) -2 HP @ 277 Vac -1 HP @ 120 Vac
CS-RIBX24BA	.50-20 Amps	Internal with contact status	Adjustable	Solid State Contact; 30 Vac/dc, 0.4 Amp	20 Amp	No	
CS-RIBX24BV	0-20 Amps	Internal with voltage output	Analog	0-5 Vdc; 0-10 Vdc	20 Amp	No	
CS-RIBX24SBF ²	.50-20 Amps	Internal with contact status	Fixed, .50 Amp	Solid State Contact; 30 Vac/dc, 0.4 Amp	20 Amp	Yes	
CS-RIBX24SBA	.50-20 Amps	Internal with contact status	Adjustable	Solid State Contact; 30 Vac/dc, 0.4 Amp	20 Amp	Yes	
CS-RIBX24SBV	0-20 Amps	Internal with voltage output	Analog	0-5 Vdc; 0-10 Vdc	20 Amp	Yes	

1. Internal current sensor monitors current through common contact of relay.
2. Normally Open or Normally Closed selected by yellow jumper wire.

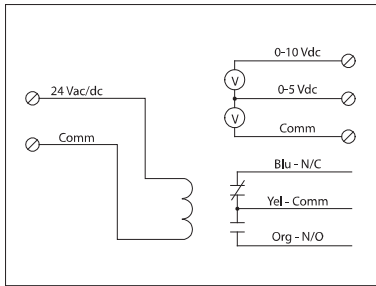
Product Specifications

- Expected Relay Life _____ 10 million cycles minimum mechanical
- Operating Temperature _____ -30 to 140° F
- Humidity Range _____ 5 to 95% (noncondensing)
- Operate Time _____ 20mS
- Relay Status _____ Red LED On = Activated
- Dimensions _____ 4.00" x 4.00" x 1.80" with .50" NPT Nipple
- Wire Length _____ 16", 600V Rated
- Approvals _____ UL Listed, UL916, UL864, C-UL, California State Fire Marshal, CE, RoHS
- Housing Rating _____ UL Accepted for Use in Plenum, NEMA 1
- Gold Flash _____ No
- Coil Current:
 - _____ 50 mA @ 18 Vac
 - _____ 83 mA @ 24 Vac
 - _____ 33 mA @ 22 Vdc
 - _____ 35 mA @ 24 Vdc
 - _____ 47 mA @ 30 Vdc
- Coil Voltage Input _____ 24 Vac/dc ; 50-60 Hz
 - Drop Out _____ 3 Vac / 3.8 Vdc
 - Pull In _____ 18 Vac / 22 Vdc
- Sensor Output _____ CS-RIBX24BA, CS-RIBX24BF, CS-RIBX24SBA, CS-RIBX24SBF, CS-RIBX24SBV
 - When Current sensor status is off (open), leakage _____ <30 uA @ 30Vac/dc
 - When current sensor status is on (closed), voltage drop _____ < .3 Vac/dc @ .1 Amp
 - _____ < 1.6 Vac/dc @ .4 Amp
- Sensor Output _____ CS-RIBX24BV
 - _____ Voltage output is proportional to current sensor range
 - _____ Min. Input Impedance = 30K ohms
 - _____ Accuracy +/- 1% full scale
 - _____ Vripple < 10m Vac

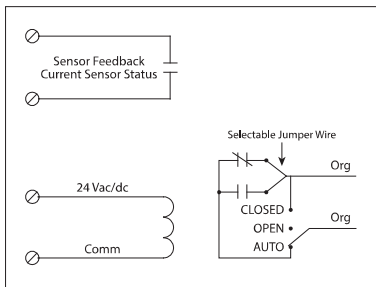
Block Diagram for Models CS-RIBX24BA, CS-RIBX24BF



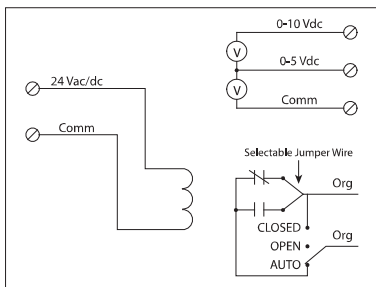
Block Diagram for Models CS-RIBX24BV



Block Diagram for Models CS-RIBX24SBA, CS-RIBX24SBF



Block Diagram for Models CS-RIBX24SBV



Specifications subject to change without notice.
Distech Controls, and the Distech Controls logo are trademarks of Distech Controls Inc. All other trademarks are property of their respective owner.
©, Distech Controls Inc., 2015. All rights reserved.