

UNMATCHED PERFORMANCE DIVERSE APPLICATIONS REVOLUTIONIZING INDUSTRIAL AUTOMATION

XM-PRO 10



PLC System for Industrial Automation

MADE IN INDIA. MADE FOR THE WORLD.



**XM-PRO
10**



Messung proudly presents a groundbreaking series of cost-effective PLC controllers, specifically engineered to deliver exceptional performance and user-friendly functionality. Unveiled as part of Messung's visionary 'Navonmesh-Make in India initiative,' XM-PRO 10 sets new standards as a compact, versatile, and fully customizable device. Its capabilities are further enhanced by a comprehensive selection of Local I/O and Remote I/O modules, ensuring effortless expandability.

A NEW BENCHMARK OF **INDUSTRIAL AUTOMATION**

Experience unrivaled versatility and future-proof performance with Messung's XM-PRO 10 PLC system. This cutting-edge automation solution sets new industry standards and caters to diverse sectors. Embrace innovation and propel your operations forward with the XM-PRO 10 PLC system.



COMPACT EXPANDABLE FLEXIBLE

- Compact XM-PRO 10 Device unit packed with 17 on-board I/O
- CPU Base variant with 8-DI, 6-DO, 2-AI and 1-AO
- Expandable up to 80 I/Os or 5 units

ESPECIALLY USER FRIENDLY

- Pluggable terminal connector
- DIN Rail mount assembly
- Diagnostics LEDs on CPU unit, Expansion module and Remote I/O module

CONFIGURABLE I/Os

- 24VDC Sink/source type Inputs
- 24VDC Source type Transistor Outputs
- Configurable Analog Inputs and Outputs (0-10v/0-20mA/4-20mA)

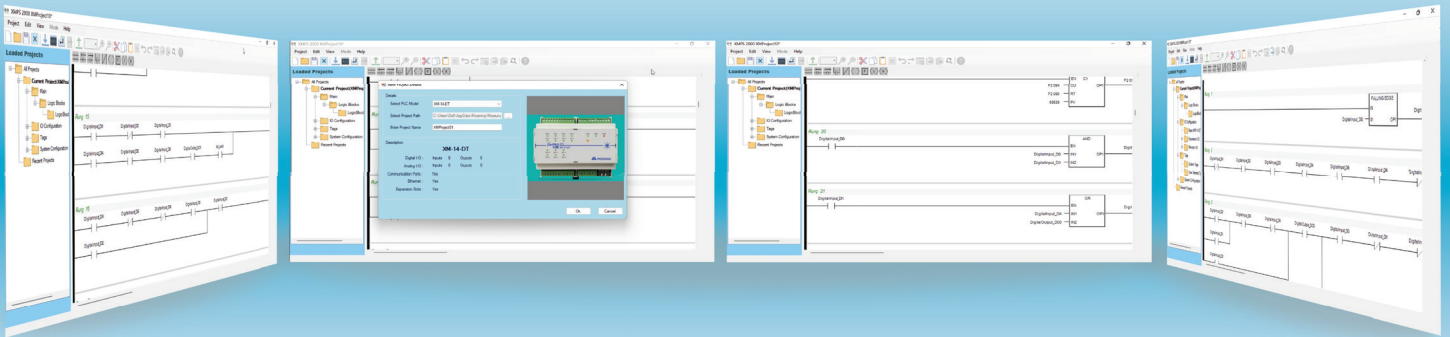
READY TO USE MODBUS RTU/ MODBUS TCP

- Eliminates external converter
- Variety of protocol connectivity- Modbus RTU (Master), Modbus TCP (Client/Server)
- Other development protocol possible

DESIGNED FOR UTILITY, FLEXIBILITY, COMPATIBILITY.

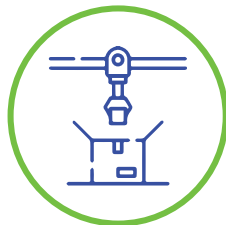
XMPS-2000
SOFTWARE

- A Windows-based utility
- User friendly environment for better experience with software tools
- Programming flexibility, making it compatible to a varied range of applications
- Online diagnostics functionality for runtime status
- Standard Programming Language LD: Ladder Diagram



WIDE APPLICATIONS. COMPACT SIZE.

Messung's new XM-PRO 10 PLC system can be used for a wide range of small to mid-range applications across industry verticals. This flexible and future-proof industrial automation solution is ideal for Special Purpose Machines, and for Packaging, Labelling, Sorting in the Food Processing industry. The gamut of applications also includes Textile, Chemical, Automobile, Machine Tools, Plastic Moulding, Printing and other industries.



PRODUCT SPECIFICATIONS

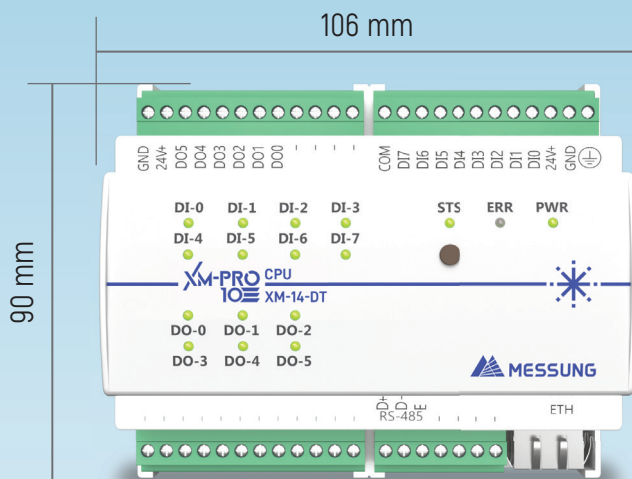
Input Power	24VDC
CPU Speed	0.8μS for BOOL instruction and <2.5 μS for WORD instruction
CPU Scan Time	12ms for <=1k statement
Application Program Memory	128Kbytes
Retained Memory	1kb
I/O Capacity (Base+Expansion+Remote)	Can be expanded up to 80 I/Os
Expansions	5 unit max.
Digital Inputs	8 channel 24VDC isolated inputs (sink/source)
Analog Inputs	12bit, 0-10v/0-20mA/4-20mA
Digital Outputs	6 channel 24VDC transistor output (500mA per channel)
Analog Outputs	12bit, 0-10v/0-20mA/4-20mA
Communication Ports	Ethernet, RS485
Protocols	Modbus TCP (Client/Server), Modbus RTU (Master)
Programming Software	XMPS-2000
Certification	CE

XM-PRO CPU VARIANTS

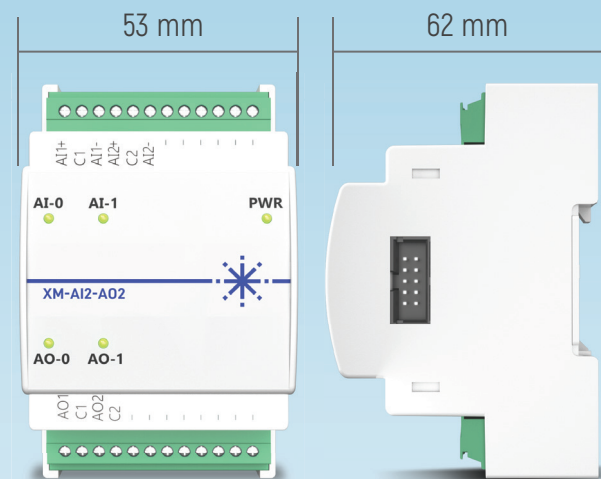
XM-14-DT	XM-PRO PLC Base Unit with 8 ch. 24VDC Inputs & 6 ch. 24VDC Outputs 500mA
XM-17-ADT	XM-PRO PLC Base Unit with 8 ch. 24VDC Inputs & 6 ch. 24VDC Outputs 500mA, 2 ch. Analog Inputs & 1 ch. Analog Output

DIMENSIONAL DETAILS

BASE UNIT



EXPANSION MODULE



LOCAL I/O EXPANSION MODULES

XM-DI-4	4 channel Digital Input, 24VDC sink/source type, 2 groups of 2 channels, optically isolated
XM-DI-8	8 channel Digital Input, 24VDC sink/source type, 2 groups of 4 channels, optically isolated
XM-DI-16	16 channel Digital Input, 24VDC sink/source type, 2 groups of 8 channels, optically isolated
XM-DO-4T	4 channel Digital Output, 24VDC source type transistor output (500mA per output) 1.5A per group 2 groups of 2 channels, optically isolated
XM-DO-8T	8 channel Digital Output, 24VDC source type transistor output (500mA per output) 1.5A per group 2 groups of 4 channels, optically isolated
XM-DO-16T	16 channel Digital Output, 24VDC source type transistor output (500mA per channel) 1.5A per group 2 groups of 8 channels, optically isolated
XM-DO-4R	4 channel Relay Output, Contact Rating-24 to 250VAC, 5-30 VDC/1A for Resistive load
XM-DO-8R	8 channel Relay Output, Contact Rating-24 to 250VAC, 5-30 VDC/1A for Resistive load
XM-DO-16R	16 channel Relay Output, Contact Rating-24 to 250VAC, 5-30 VDC/1A for Resistive load
XM-DI8-DO6T	8 channel Digital Input, & 6 channel Digital Output, 24VDC sink/source type & 24VDC source type transistor output (500mA per output) 1.5A per group
XM-DI8-DO6R	8 channel Digital Input, & 6 channel Digital Output, 24VDC sink/source type & Contact Rating-24 to 250VAC/1A for Resistive load
XM-AI-2	2 channel Analog Input, 12bit (0-10v/0-20mA/4-20mA)
XM-AI-4	4 channel Analog Input, 12bit (0-10v/0-20mA/4-20mA)
XM-AO-2	2 channel Analog Output, 12bit (0-10v/0-20mA/4-20mA)
XM-AO-4	4 channel Analog Output, 12bit (0-10v/0-20mA/4-20mA)
XM-AI2-AO2	2 channel Analog Input and 2 channel Analog Output, 12bit (0-10v/0-20mA/4-20mA)
XM-UI4-UO2	4 channel Universal input (Dry contact,0-10V/0-20mA/4-20mA, Resistance PT100,PT1000,NTC) 2 channel Universal output (12VDC source type transistor output (100mA), 0-10VDC,0-20mA)

REMOTE I/O MODULES

Modbus RTU Protocol with RS485 Communication interface.

MOD-DI-8	8 channel Digital Input, 24VDC sink/source type, 2 groups of 4 channels
MOD-DO-16R	16 channel Relay Output, (250VAC-2A/30VDC-2A), 24VDC. 2 of 8 output channels
MOD-AI-4	4 channel Analog Input, 12bit (0-10v/0-20mA/4-20mA)
MOD-AO-4	4 channel Analog Output, 12bit (0-10v/4-20mA/0-20mA)

MESSUNG SYSTEMS PVT. LTD.

MESSUNG INDUSTRIAL AUTOMATION

501, 502 & 503 Lunkad Sky Vista, Viman Nagar, Pune, India - 411 014.

Contact: +91 20664 92800

www.messungautomation.co.in | info@messung.com

automation & controls
electrical engineering
workplace technology

Process Automation
Servo & Motion Control Automation
General Purpose Automation